



**3.3V/5V 3GHz PECL/ECL  
2:1 MULTIPLEXER**

**Precision Edge®  
SY89208V**

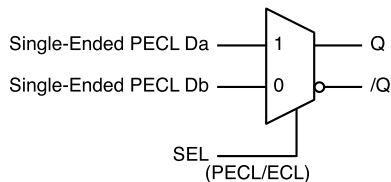
**FEATURES**

- 2:1 PECL/ECL multiplexer
- Guaranteed AC-performance over temperature/voltage
  - >3GHz  $f_{MAX}$  (toggle)
  - <200ps rise/fall time
  - <420ps propagation delay (D-to-Q)
- Low jitter performance
  - <1ps<sub>RMS</sub> random jitter
  - <15ps<sub>PP</sub> deterministic jitter
  - <10ps<sub>PP</sub> total jitter (clock)
- Flexible supply voltage: 3V to 5.5V
- 100k ECL/PECL compatible output
- Wide operating temperature range: -40°C to +85°C
- Available in ultra-small 8-pin MLF™ (2mm x 2mm) package

**APPLICATIONS**

- SONET
- Gig Ethernet
- Fibre Channel
- Transponders

**FUNCTIONAL BLOCK DIAGRAM**



**Precision Edge®**

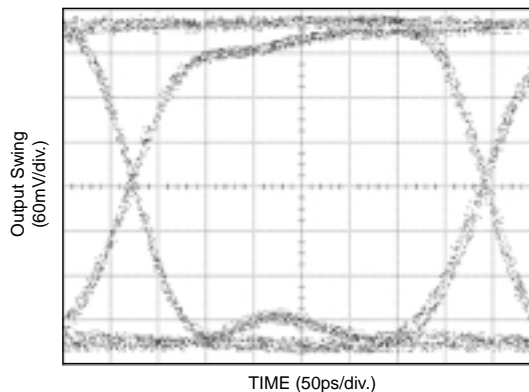
**DESCRIPTION**

The SY89208V is a 3.3V/5V precision high-speed 2:1 multiplexer. It is functionally equivalent to the SY100EP58V but in an ultra-small 8-lead MLF™ package that features a 70% smaller footprint. The signal-path inputs (Da and Db) are single-ended PECL/ECL compatible, and can accept a signal swing as low as 150mV. All I/O pins are 10k/100k EP ECL/PECL compatible.

AC-performance is guaranteed over the industrial -40°C to +85°C temperature range and 3.0V to 5.5V supply voltage range. Maximum throughput ( $f_{MAX}$ ) is guaranteed to be 3GHz with a differential output swing  $\geq 400mV$ . In addition, these multiplexers are optimized for low-jitter applications. The SY89208V is designed to operate in either ECL/PECL or PECL/LVPECL mode. The SY89208V is internally temperature compensated, thus is 100k EP ECL/PECL compatible—I/O logic levels remain constant over temperature.

The SY89208V is part of Micrel's high-speed, Precision Edge™ timing and distribution family. For applications that require a differential I/O combination, consult the Micrel website at: [www.micrel.com](http://www.micrel.com), and choose from a comprehensive product line of high-speed, low skew fanout buffers, translators, and clock dividers.

**TYPICAL PERFORMANCE**

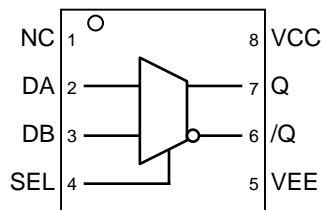


**2.7Gbps, 2<sup>23</sup> – 1PRBS**

Precision Edge is a registered trademark of Micrel, Inc.  
MicroLeadFrame and MLF are trademarks of Amkor Technology, Inc.

**PACKAGE/ORDERING INFORMATION**

**Ordering Information<sup>(1)</sup>**



**8-Pin MLF™  
Ultra-Small Outline (2mm x 2mm)**

Part Number	Package Type	Operating Range	Package Marking	Lead Finish
SY89208VMITR <sup>(2)</sup>	MLF-8	Industrial	208	Sn-Pb
SY89208VMGTR <sup>(2)</sup>	MLF-8	Industrial	208 with Pb-Free bar-line indicator	Pb-Free NiPdAu

**Notes:**

1. Contact factory for die availability. Dice are guaranteed at T<sub>A</sub> = 25°C, DC electricals only.
2. Tape and Reel.

**PIN DESCRIPTION**

Pin Number	Pin Name	Type	Pin Function
2, 3	DA, DB	100k ECL Input	Single-ended PECL/ECL Inputs: The signal inputs include internal 75kΩ pull-down resistors. Default condition is LOW when left floating. The input signal should be terminated externally.
4	SEL	100k ECL Input	Single-ended PECL/ECL Input: PECL/ECL compatible 2:1 mux select. See Truth Table. Includes internal 75kΩ pull-down resistor. Default condition is LOW when left floating.
5	VEE Exposed Pad	Negative Power Supply	Negative Power Supply: VEE and Exposed pad must be tied to most negative supply. For PECL/LVPECL connect to ground.
6, 7	/Q, Q	100k ECL Output	Differential PECL/LVPECL Output: 100k ECL/ output defaults to LOW if D inputs left open. See "Output Interface Applications" section for recommendations on terminations.
8	VCC	Power	Positive Power Supply: Bypass with 0.1μF//0.01μF low ESR capacitors.
1	NC		Not connected.

**MUX SELECT TRUTH TABLE**

SEL	DATA OUT (Q, /Q)
L	DB Input Selected
H	DA Input Selected

### Absolute Maximum Ratings<sup>(Note 1)</sup>

Supply Voltage ( $V_{CC}$ ) .....	-0.5V to + 6.0V
Input Voltage ( $V_{IN}$ ) .....	-0.5V to $V_{CC}$
LVPECL Output Current ( $I_{OUT}$ )	
Continuous .....	50mA
Surge .....	100mA
Input Current	
Source or sink current on D, /D .....	±50mA
Lead Temperature (soldering, 10 sec.) .....	+220°C
Storage Temperature ( $T_S$ ) .....	-65°C to +150°C

### Operating Ratings<sup>(Note 2)</sup>

Supply Voltage ( $ V_{CC}-V_{EE} $ ) .. LVPECL/LVECL	3.0V to 3.6V
..... PECL/ECL	4.5V to 5.5V
Ambient Temperature ( $T_A$ ) .....	-40°C to +85°C
Package Thermal Resistance <b>Note 3</b>	
MLF™ ( $\theta_{JA}$ )	
Still-Air .....	93°C/W
500lfpm .....	87°C/W
MLF™ ( $\Psi_{JB}$ ),	
Junction-to-Board .....	60°C/W

## DC ELECTRICAL CHARACTERISTICS<sup>(Note 4)</sup>

Symbol	Parameter	Condition	Min	Typ	Max	Units
$V_{CC}$	Power Supply Voltage (PECL) (LVPECL) (ECL) (LVECL)		4.5	5.0	5.5	V
			3.0	—	3.6	V
			-5.5	-5.0	-4.5	V
			-3.6	-3.3	-3.0	V
$I_{EE}$	Supply Current	No load	—	35	50	mA
$I_{IH}$	Input HIGH Current	$V_{IN} = V_{IH}$	—	—	80	µA
$I_{IL}$	Input LOW Current	All Inputs $V_{IN} = V_{IL}$	0.5	—	—	µA
$C_{IN}$	Input Capacitance		—	1.0	—	pF

## PECL/ECL (100K) DC ELECTRICAL CHARACTERISTICS<sup>(Note 4)</sup>

$V_{CC} = +3.3V \pm 10\%$  or  $+5V \pm 10\%$  and  $V_{EE} = 0V$ ;  $V_{CC} = 0V$  and  $V_{EE} = -3.3V \pm 10\%$  or  $-5V \pm 10\%$ ;  $T_A = -40^\circ C$  to  $+85^\circ C$  unless otherwise noted.

Symbol	Parameter	Condition	Min	Typ	Max	Units
$V_{OH}$	Output HIGH Voltage	<b>Note 5</b>	$V_{CC}-1.145$	—	$V_{CC}-0.895$	V
$V_{OL}$	Output LOW Voltage	<b>Note 5</b>	$V_{CC}-1.945$	—	$V_{CC}-1.695$	V
$V_{IH}$	Input HIGH Voltage		$V_{CC}-1.225$	—	$V_{CC}-0.88$	V
$V_{IL}$	Input LOW Voltage		$V_{CC}-1.945$	—	$V_{CC}-1.625$	V
$V_{IHCMR}$	Input HIGH Voltage Common Mode Range	<b>Note 6</b>	$V_{EE}+2.0$	—	$V_{CC}$	V
$V_{BB}$	Bias Voltage		$V_{CC}-1.525$	$V_{CC}-1.425$	$V_{CC}-1.325$	V

**AC ELECTRICAL CHARACTERISTICS**

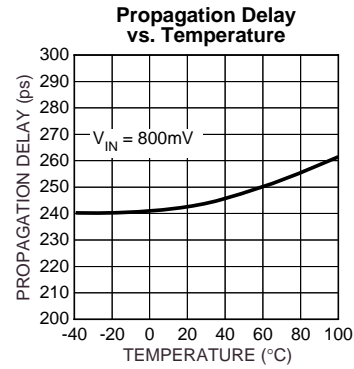
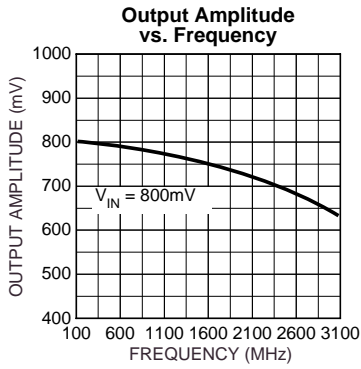
$V_{CC} = +3.3V \pm 10\%$  or  $+5V \pm 10\%$  and  $V_{EE} = 0V$ ;  $V_{CC} = 0V$  and  $V_{EE} = -3.3V \pm 10\%$  or  $-5V \pm 10\%$ ;  $T_A = -40^\circ C$  to  $+85^\circ C$  unless otherwise noted.

Symbol	Parameter	Condition	Min	Typ	Max	Units
$f_{MAX}$	Max. Toggle Frequency	<b>Note 7</b>	3	—	—	GHz
$t_{pd}$	Propagation Delay (Differential) SEL to Q, /Q; D to Q, /Q		170	230	420	ps
$t_{SKEW}$	Part-to-Part Skew	<b>Note 8</b>	—	—	200	ps
$t_{JITTER}$	Cycle-to-Cycle Jitter (rms)	<b>Note 9</b>	—	—	1	ps <sub>RMS</sub>
	Random Jitter	<b>Note 10</b>	—	—	1	ps <sub>RMS</sub>
	Deterministic Jitter @1.25Gbps @2.5Gbps	<b>Note 11</b> <b>Note 10</b>	— —	7 10	— —	ps <sub>pp</sub> ps <sub>pp</sub>
	Total Jitter	<b>Note 12</b>	—	—	10	ps <sub>pp</sub>
$V_{IN}$	Differential Input Voltage Range		150	800	1200	mV
$t_r, t_f$	Output Rise/Fall Time (20% to 80%) Q, /Q		90	140	200	ps

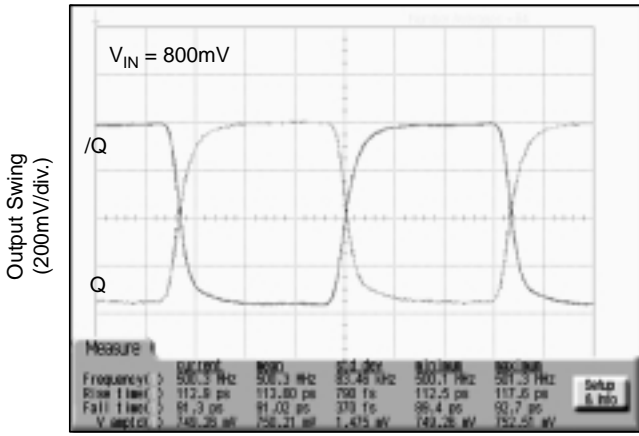
- Note 1.** Permanent device damage may occur if ABSOLUTE MAXIMUM RATINGS are exceeded. This is a stress rating only and functional operation is not implied at conditions other than those detailed in the operational sections of this data sheet. Exposure to ABSOLUTE MAXIMUM RATING conditions for extended periods may affect device reliability.
- Note 2.** The data sheet limits are not guaranteed if the device is operated beyond the operating ratings.
- Note 3.** Package Thermal Resistance assumes exposed pad is soldered (or equivalent) to the devices most negative potential on the PCB.
- Note 4.** The device is guaranteed to meet the DC specifications, shown in the table above, after thermal equilibrium has been established.
- Note 5.** Output loaded with 50Ω to  $V_{CC} - 2V$ .
- Note 6.**  $V_{IHCMR}(\min)$  varies 1:1 with  $V_{EE}$ . (max) varies 1:1 with  $V_{CC}$ .
- Note 7.** Measured with 750mV input signal, 50% duty cycle. Output swing  $\geq 400mV$ . All loading with a 50Ω to  $V_{CC} - 2.0V$ .
- Note 8.** Skew is measured between outputs under identical transitions. Duty cycle skew is defined only for differential operation when the delays are measured from the cross point of the inputs to the cross point of the outputs.
- Note 9.** The variation in period between adjacent cycles over a random sample of adjacent cycle pairs.  $t_{JITTER\_CC} = t_n - t_{n+1} + 1$ , where t is the time between rising edges of the output signal.
- Note 10.** Random jitter is measured with a K28.7 comma detect character pattern, measured at 1.25Gbps and 2.5Gbps.
- Note 11.** Deterministic jitter is measured at 1.25Gbps and 2.5Gbps, with both K28.5 and 2<sup>23</sup>-1 PRBS pattern.
- Note 12.** Total Jitter definition with an ideal clock input, no more than 1 output edge in 10<sup>12</sup> output edges will deviate by more than specified peak-to-peak jitter value.

**TYPICAL OPERATING CHARACTERISTICS**

V<sub>CC</sub> = 3.3V, V<sub>EE</sub> = GND, T<sub>A</sub> = 25°C, unless otherwise stated.

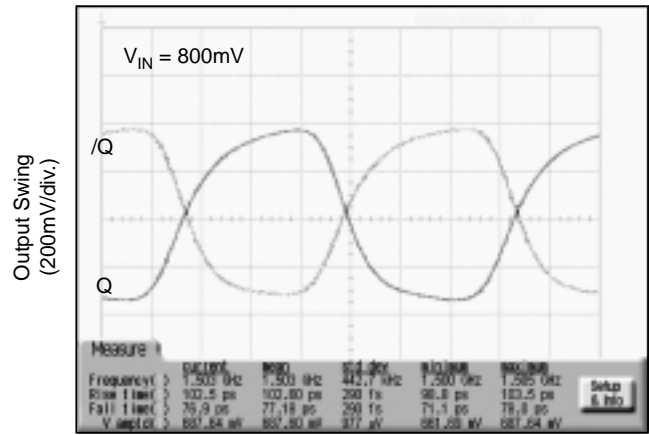


**500MHz Output**



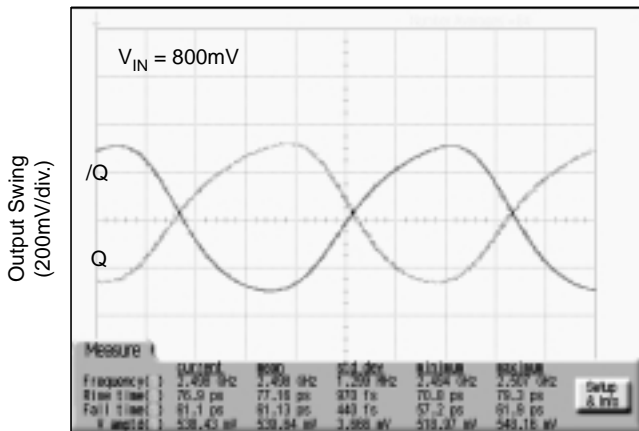
TIME (300ps/div.)

**1.5GHz Output**



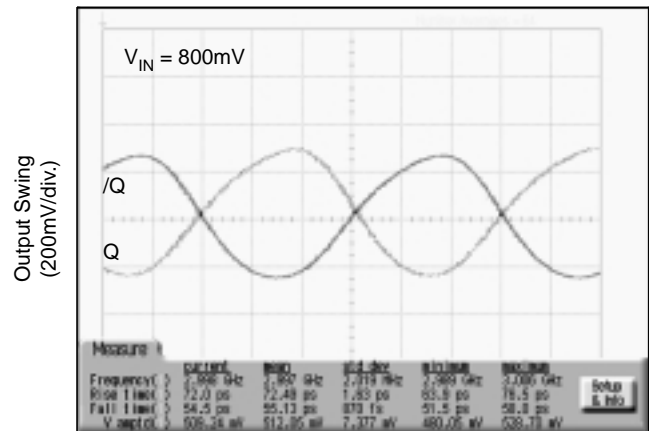
TIME (100ps/div.)

**2.5GHz Output**



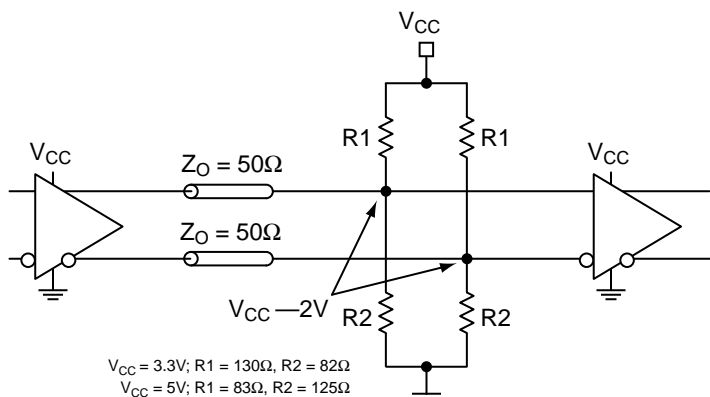
TIME (60ps/div.)

**3.0GHz Output**

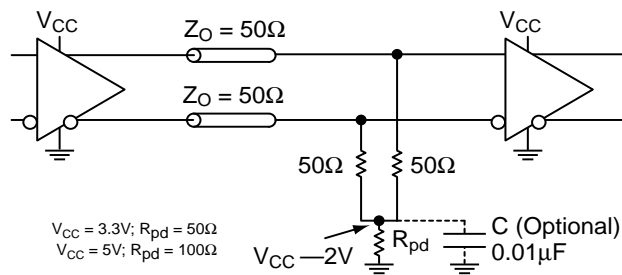


TIME (55ps/div.)

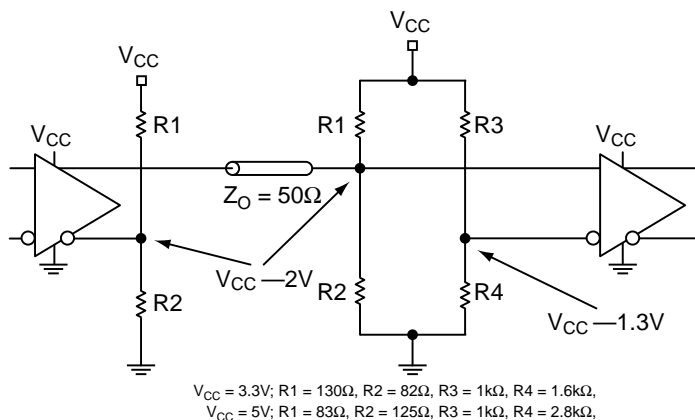
**LVPECL OUTPUT INTERFACE APPLICATIONS**



**Figure 1a. Parallel Thevenin-Equivalent Termination**

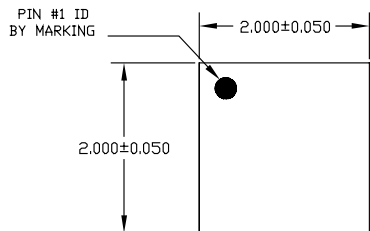


**Figure 1b. Three Resistor "Y Termination"**

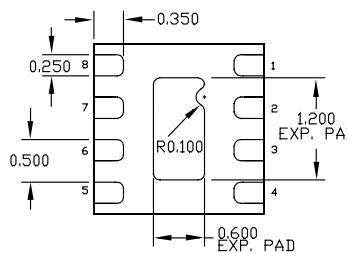


**Figure 1c. Terminating Unused I/O**

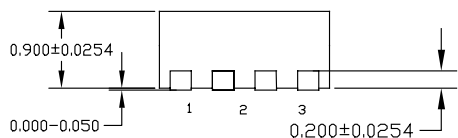
**8 LEAD ULTRA-SMALL EPAD-MicroLeadFrame™ (MLF-8)**



TOP VIEW

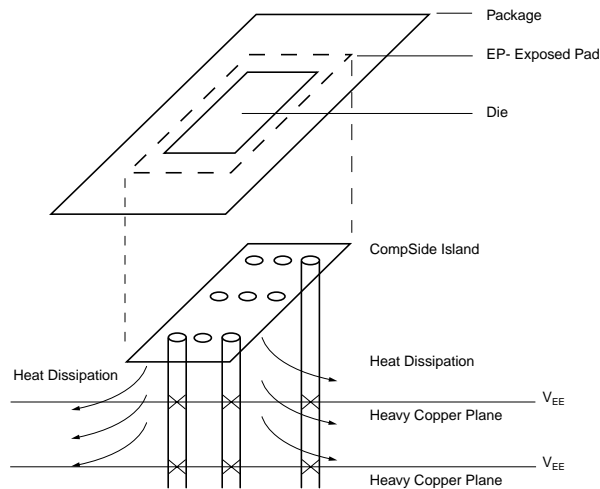


BOTTOM VIEW



SIDE VIEW

- NOTE:
1. ALL DIMENSIONS ARE IN MILLIMETERS.
  2. MAX. PACKAGE WARPAGE IS 0.05 mm.
  3. MAXIMUM ALLOWABLE BURRS IS 0.076 mm IN ALL DIRECTIONS.
  4. PIN #1 ID ON TOP WILL BE LASER/INK MARKED.



**PCB Thermal Consideration for 8-Pin MLF™ Package**

**Package Notes:**

- Note 1.** Package meets Level 2 qualification.
- Note 2.** All parts are dry-packaged before shipment.
- Note 3.** Exposed pads must be soldered to the most negative supply plane, equivalent to  $V_{EE}$  for proper thermal management.

**MICREL, INC. 2180 FORTUNE DRIVE SAN JOSE, CA 95131 USA**

TEL + 1 (408) 944-0800 FAX + 1 (408) 474-1000 WEB <http://www.micrel.com>

The information furnished by Micrel in this datasheet is believed to be accurate and reliable. However, no responsibility is assumed by Micrel for its use. Micrel reserves the right to change circuitry and specifications at any time without notification to the customer.

Micrel Products are not designed or authorized for use as components in life support appliances, devices or systems where malfunction of a product can reasonably be expected to result in personal injury. Life support devices or systems are devices or systems that (a) are intended for surgical implant into the body or (b) support or sustain life, and whose failure to perform can be reasonably expected to result in a significant injury to the user. A Purchaser's use or sale of Micrel Products for use in life support appliances, devices or systems is at Purchaser's own risk and Purchaser agrees to fully indemnify Micrel for any damages resulting from such use or sale.