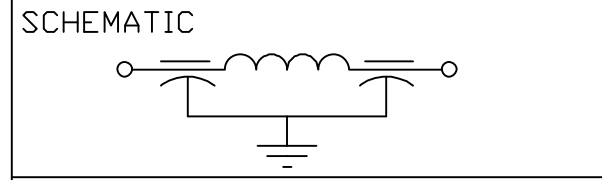


CAPACITANCE	3000pF GMV
TEMP. RANGE	-55°C/+125°C
CURRENT	25 AMPS
WORKING VOLTAGE	85°C 700 VDC 125°C 500 VDC
IL=PER MIL-STD-220 @ 25°C	
FREQ. MHz	I.L. (db)
10	8
100	50
1 GHz	70
10 GHz	70

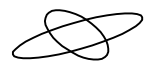


MARKING:
 PART: NONE
 FOAM PAD: API
 1204F-050
 DATE CODE
 LOT No.
 QTY.

1. MAX REFLOW IS 245°C FOR 5 SEC.



		03	02	01	00	REV. NO.	TOLERANCES UNLESS OTHERWISE SPECIFIED
		ECN #24369	CN #22714	CN 32264-CPD	CN 18639-CPD	CHANGE NOTICE	Fractions ± 1/64
							Dec. .xx±
							Dec. .xxx± .010
							Angles ±0° 30'
							CODE IDENT. NO. 0LSP2

api  technologies corp. FAIRVIEW PENNSYLVANIA

Dwn. KNOWLTON	Description
Date 11-2-16	Pi, EYELET STYLE FILTER
Engr. McALEVY	
Scale NONE	1204F-050